



# *ITC Windsor, Bengaluru*

## *Resource Conservation*





# ITC Windsor, Bengaluru

Celebrating the days of the Raj

ITC HOTELS  
RESPONSIBLE LUXURY  
THE LUXURY COLLECTION

ITC Windsor has 240 rooms ,6 F&B Restaurants , Outlets and 4 Banquet spaces

ITC Windsor, a luxury hotel in Bengaluru, merges an old world ambience with international service to create a hotel experience that goes beyond expectation.

# ITC Ltd Sustainability 2014 Report- GRI -G4 Compliant

## Environment

Carbon Positive:  
9 Consecutive years

Water Positive:  
12 years in a row

Solid Waste Recycling  
Positive: for the last 7 years

Soil & Moisture conservation  
to 1,49,000 hectares

ITC's Watershed Development initiative brings precious water to 1,49,000 hectares of moisture-stressed areas

38% Renewable Energy

38% of ITC's total energy consumption is from renewable sources

Greenest luxury Hotel Chain

All ITC's premium luxury Hotels are LEED® Platinum certified

1,63,000 hectares greened

ITC's Social and Farm Forestry initiative has greened 1,63,000 hectares





# ITC Hotels- Responsible Luxury



ITC Hotels is an exemplar in sustainable hospitality with all its premium hotels being LEED® Platinum certified and First & Largest Luxury Hotel Chain on Earth.



# ITC Windsor- Unique Features



ITC Windsor was the 1<sup>st</sup> Hotel in South India to be awarded with USGBC LEED Platinum Certification under “Existing Building”



100% of ITC Windsor’s electrical power demand is met through renewable Wind Electric generators.



# ITC Windsor- Unique Features

ITC Windsor is one of the Few Hotels on earth and  
1<sup>st</sup> Hotel in ITC Hotels to achieve  
**90% Renewable Energy Footprint per day.**



ITC Windsor's HSD ( High Speed Diesel ) requirement for  
steam and hot water generation requirement is met through  
**renewable 100% Biodiesel B-100** produced out from  
**Waste Cooking Oil.**

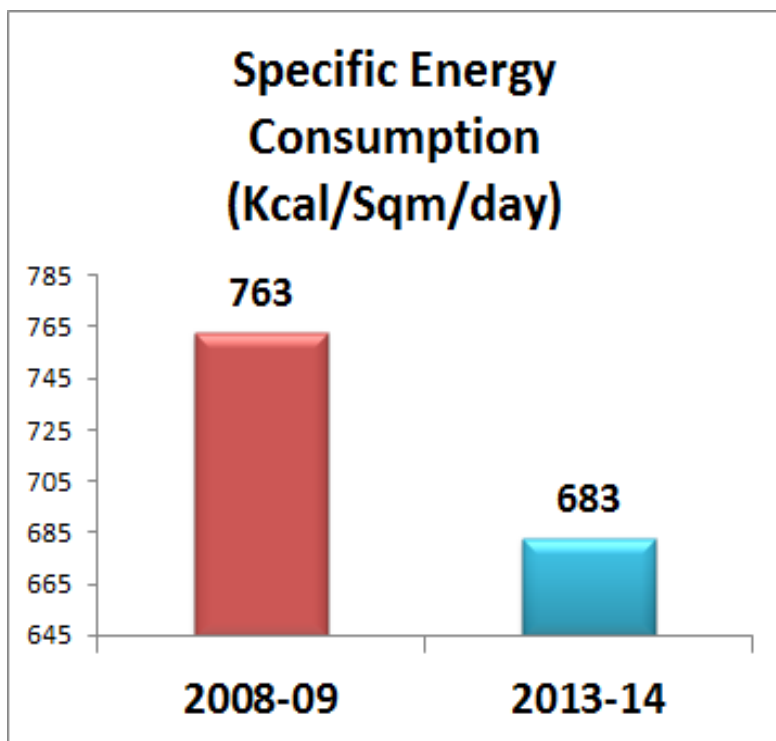


**High Speed Diesel**

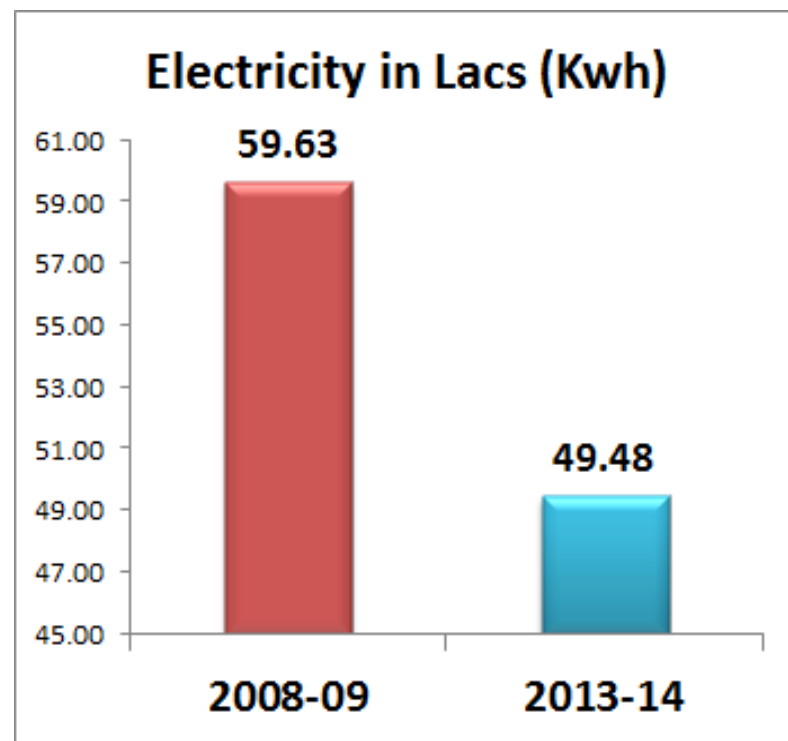
# ITC Windsor

## Energy Efficiency Performance

ITC Windsor has consistently reduce the Energy need requirement by conducting Regular Energy Audit



**Specific Energy consumption  
Savings of 10.5 %**

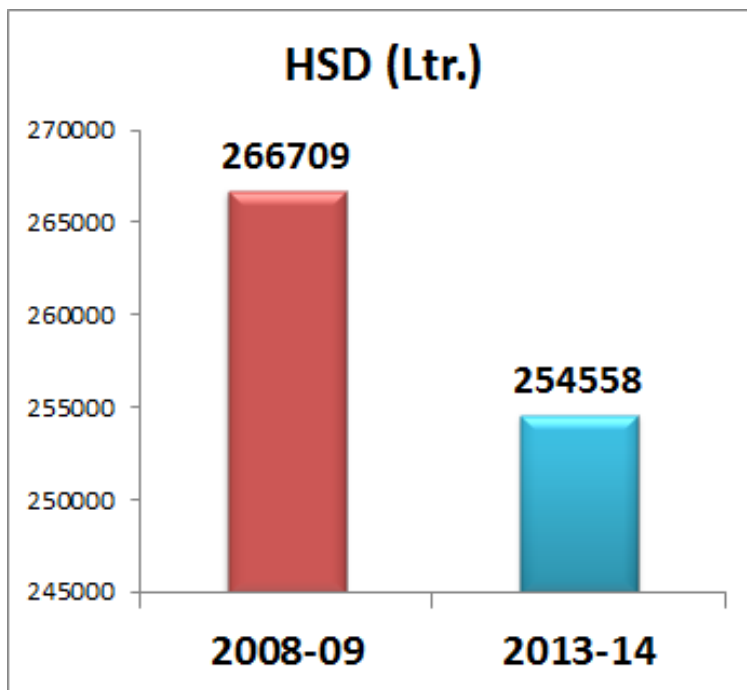


**Electrical consumption  
Savings of 17%**

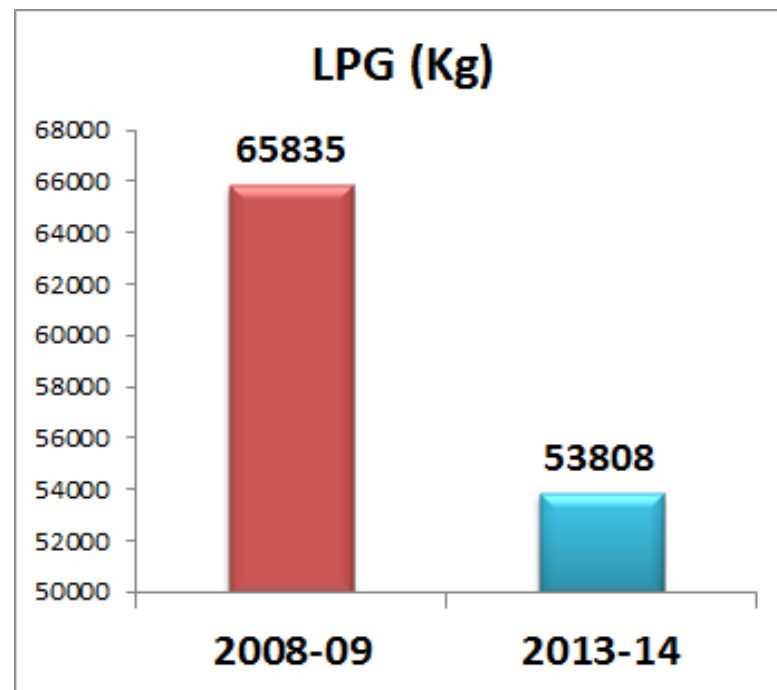
# ITC Windsor

## Energy Efficiency Performance

ITC Windsor has consistently reduce the Energy need requirement by conducting Regular Energy Audit



**HSD consumption  
Savings of 5 %**



**LPG consumption  
Savings of 18%**

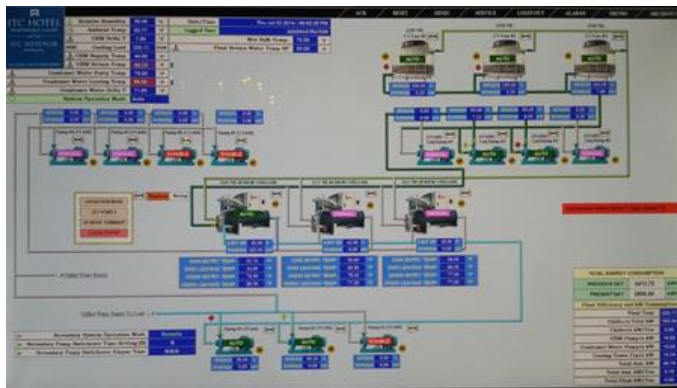


# ITC Windsor

## Energy Efficiency Performance

Green Chillers with **Chiller Online Energy Manager System** that provide Air conditioning comfort with lowest Electrical consumption. (**0.4 units** of electrical power consumption for 1 ton of air conditioning)

Variable pumping system for Air-conditioning which saves more than 10% of electrical energy vis-à-vis conventional system



# ITC Windsor

## Energy Efficiency Performance

Energy efficient boilers with automated Oxygen supply aiding low Diesel / fuel consumption

100 % waste heat utilization for hot water generation

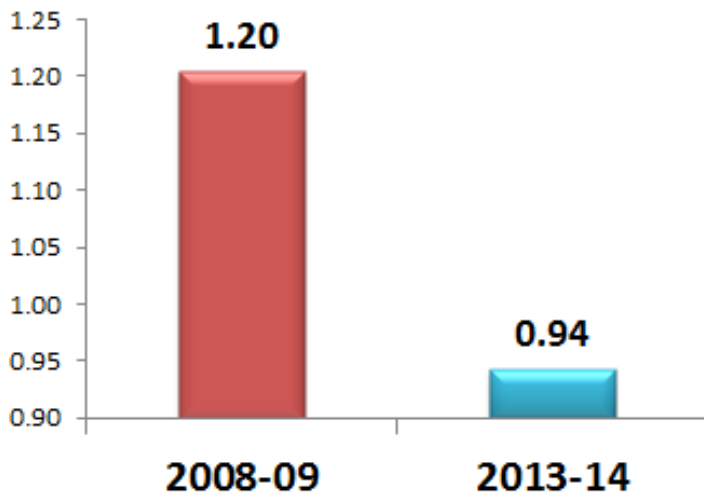


# ITC Windsor

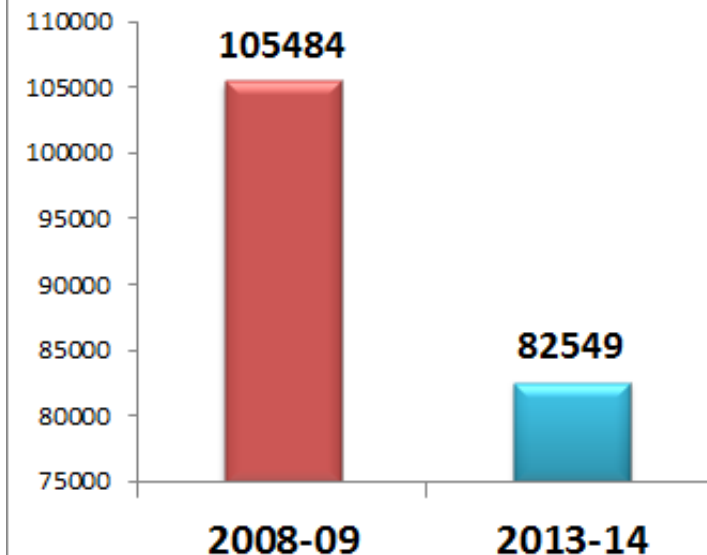
## Water Efficiency Performance

ITC Windsor has consistently reduce the Water need requirement by conducting Regular Water Audit

**Spec. Water Consumption  
per available room in KL**



**Water consumption (KL)**



**Specific Water consumption  
Savings of 21.74%**

**Water consumption  
Savings of 21.74%**



# ITC Windsor

## Water Efficiency Performance

### Water Efficient Fixtures and Controller

- 1) Use of Low Flow Plumbing Fixtures
- 2) Use of Aerators and Flow Restrictors
- 3) Use of Dual Flush and sensor operated urinals
- 4) Use of Bio Urinal screen



## Water Efficiency Performance

### 3 D Trasar Technology for Cooling Tower Water

continuously monitoring the cooling tower water quality on various parameters like TDS, turbidity, copper corrosion, steel corrosion & pH and optimizing the blow down of cooling tower water



### Use of Closed loop methodology

to save fresh water requirement of 6.17 Kl per annum in **Dry cleaning machine** and 2.17 Kl per annum in **Hotel Main Lobby Fountain**



# ITC Windsor

## Water Efficiency Performance

### Use of 100% Recycled STP Treated Water

1. Cooling Tower Water requirement
2. Use of STP Treated water for flushing requirement
3. Utilization in External Fountain
4. Utilization in Horticulture
5. Sharing of STP treated water for Bangalore Golf Course in front of ITC Windsor

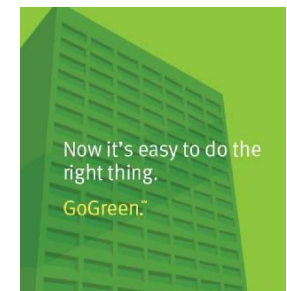
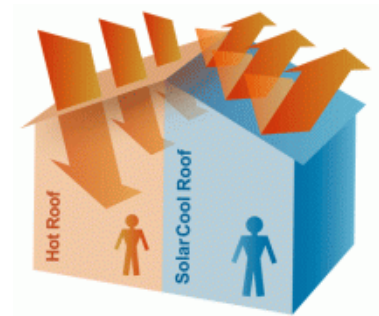




# ITC Windsor

## Sustainable Site Development

- ❖ 66% of Plants are native in nature
- ❖ Over 75% of the roof area is covered with a special paint that has a high Solar Reflective Index, thereby reducing the cooling demand.
- ❖ At an average 78% of associates travel by either public transport or use pool vehicles
- ❖ No chemicals are used for management / upkeep of exterior or façade of the hotels.



# ITC Windsor

## Sustainable Material and Resources

- ❖ Total solid waste is either reused or recycled through recycling programs or converted into manure by Organic Waste Converter.
- ❖ More than 30% of the food and beverage used is harvested and processed locally within 160 kilometers of the hotel
- ❖ 50-60% of ongoing consumables (stationery in guests rooms and offices) used in ITC Hotels are either sourced locally or recycled
- ❖ Low VOC (Volatile Organic Compounds) paints and FSC (Forest Stewardship Council) certified wood is used for all refurbishments and renovations.
- ❖ Usage of LED lamps that are energy efficient with no mercury content.



# Thank You for Endorsing Responsible Luxury

